

Our Mission

Working to enhance the quality of life and promote the independence of older adults, their families and care providers.

2010 ANNUAL REPORT

Demographics of Individuals Served

Ethnicity:

African American	10%
Asian/Pacific Islander	0.5%
Hispanic	1%
Native American	0.5%
White/Caucasian	87%
Other	1%

Gender:

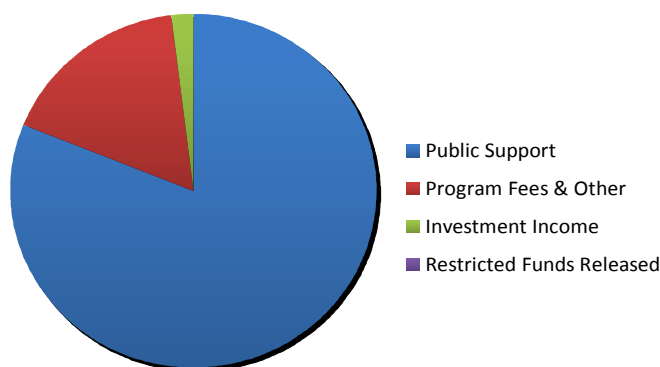
Female	67%
Male	33%

Number of Individuals Served by Programs

Continuing Care Services	295
CareTree Adult Day Health Services	249
Outreach & Assistance	378
Counseling Services	44
Nursing Home Consultation	234
Life Connections	1,310
Older Adult Volunteers	199
Vision Services	565

Financial Snapshot – Fiscal Year 2009-2010

GN's 2009-10 Revenue: \$5,558,402



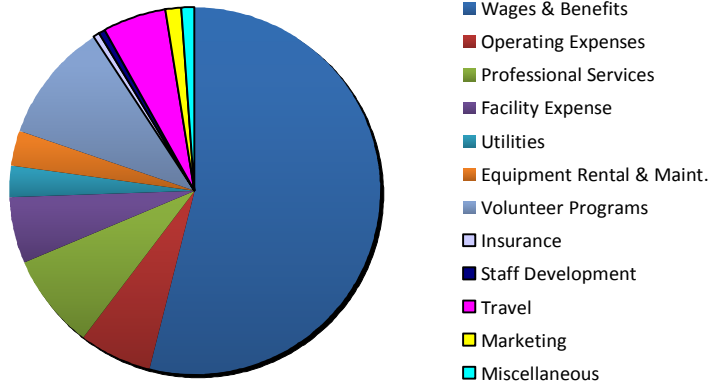
Public Support	81%
Program Fees & Other	17%
Investment Income	2%
Restricted Funds Released	0%



A Special Thank You To Our FY 2009 - 2010 Donors

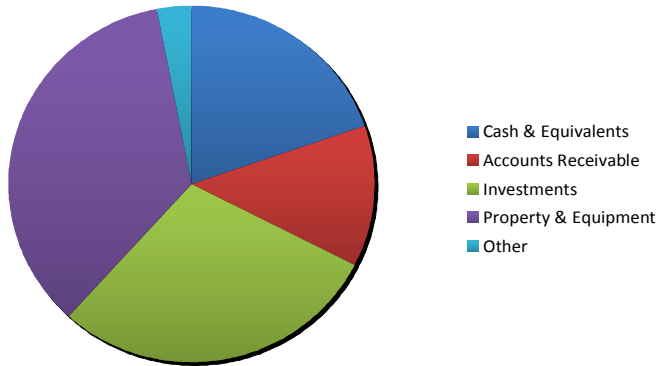
Gerontology Network – Financial Snapshot 2009-2010 continued

GN's 2009-10 Expenses: \$5,329,898



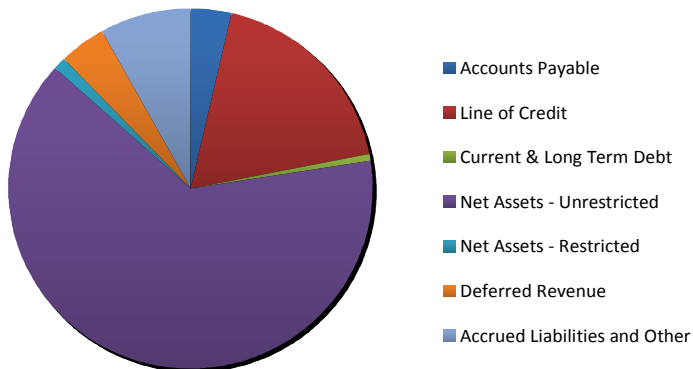
Wages & Benefits	54%
Operating Expenses	6%
Professional Services	8%
Facilities Expense	6%
Utilities	3%
Equipment Rental & Maintenance	3%
Volunteer Programs	1%
Insurance	1%
Staff Development	1%
Travel	5%
Marketing	1%
Miscellaneous	1%

GN's 2009-10 Assets: \$3,607,776



Cash & Equivalents	20%
Accounts Receivable	13%
Investments	29%
Property & Equipment	35%
Other	3%

GN's 2009-10 Liabilities & Net Assets: \$3,607,776



Accounts Payable	4%
Line of Credit	18%
Current & Long Term Debt	1%
Net Assets – Unrestricted	64%
Net Assets – Restricted	1%
Deferred Revenue	4%
Accrued Liabilities & Other	8%

Funding provided by:



Veterans Administration

Kent County Senior Millage

